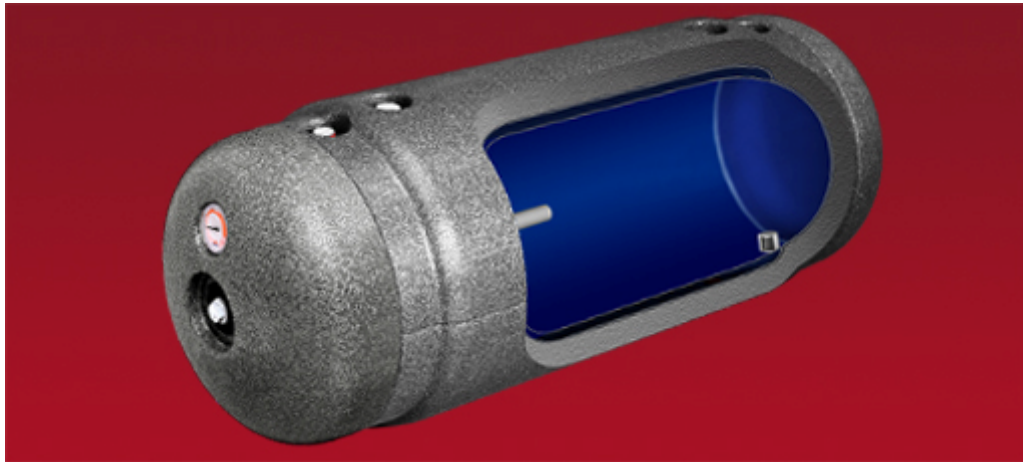


WP Termo Hit



WP Cylinder (double jacket) for co-operation with a low temp. solid fuel boiler. Capacity: 100, 120 i 140, liters.

The most modern enamelling technology

Kospel boasts the most modern fully automatic dry enamelling line for manufacturing hot water cylinders. The dry enamelling technology is an advanced method of applying enamel with optimal thickness over an entire inner surface of cylinder. This method as compared to traditional wet enamelling technology improves quality of enamel coat and ensures long-lasting cylinder performance.

Due to the fining and recovery processes at the stage of cleaning tank and enamelling it the new technology guarantees production with maximum materials saving. The manufacturing process is conducted in accordance with the newest european ecological standards.

Exceptional thermal insulation

The thermal insulation made of black hardened polystyrene foam designed for application in advanced heat engineering. The hardened and more density foam provide better thermal insulation and protection against mechanical damages.

Temperature gauge

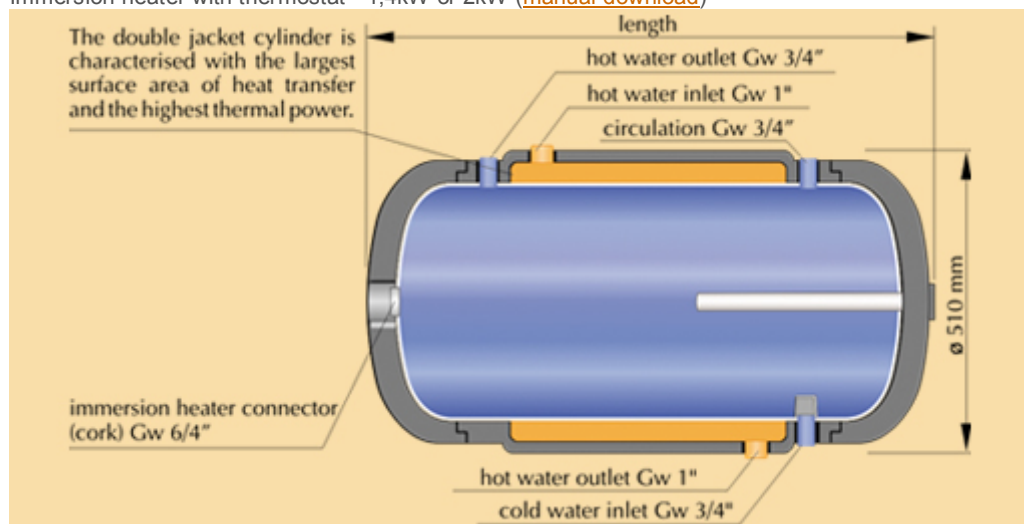
The temperature gauge is applied to read out and control water temperature.

Water diffuser

The water diffuser to reduce mixing of cold and hot water. It guarantees steady water temperature distribution.

Optional equipment

Immersion heater with thermostat - 1,4kW or 2kW ([manual download](#))



Technical data

Type		WP 100	WP 120	WP 140
Capacity	l	100	120	140
Rated pressure	MPa	container 0,6 / double jacket 0,15**		

Heat transfer surface area	m ²	0,7	0,93	1
Rated power of cylinder*	kW	19,3	25,2	26,8
Efficiency*	l/h	405	526	567
Length of cylinder	mm	1085	1255	1325

* Following parameters: *80/15/45 C – heating water temp./ feed water temp./ domestic water temp. Flow rate of heating water through the coil – 2,67 m³/h.

** WP cylinders are designed for an open central heating systems.